

BRISBANE - AUSTRALIA



ALS COLLEGE

English, Certificates & Diplomas



Why Brisbane, Australia?

Australia is the world's largest island - but smallest continent, and boasts a long history stretching back more than 30,000 years. Australia is unique, and has to be experienced to be believed. 80% of the animals you find here don't live anywhere else in the world! With its fascinating mix of cultures, landscapes and activities, there is something for everybody.

Brisbane has a subtropical climate with warm or hot weather for most of the year, making the outdoor lifestyle we enjoy possible all year round, and Queensland enjoys more winter sunshine and warmth than most other Australian states. You could spend your weekend relaxing under a gum tree, watching an AFL game, or experiencing local and international flavours at a food market.

It is the most relaxed of Australia's cities, and the pace and attitude make it perfect for study. When you are not studying, Brisbane, Queensland's state capital, is the third most populated city in Australia, and has great galleries and museums (like GOMA), entertainment venues (like Suncorp stadium) and plenty to do, see and eat!

Brisbane is the perfect gateway to everything Queensland has to offer – the beaches of the Gold and Sunshine Coasts, the world famous Great Barrier Reef as well as five World Heritage listed areas. If you are feeling adventurous, you could even go on a rainforest or outback adventure!

ALS COLLEGE A PART OF THE BRISBANE COMMUNITY

The animals hold significance for the local Traditional Owner groups and the region surrounding Brisbane: The goanna represents the Yuggera people, a symbol of strength, adaptability, and connection to land.

The long-necked tortoise, also native to the area, symbolises longevity and resilience, qualities mirrored in lifelong learning and community growth.

The snubfin dolphin, chosen to represent the Gubbi Gubbi people, reflects peace and harmony, and is native to waterways around Brisbane.



The circular patterns surrounding the ALS logo represent community and belonging, emphasising that ALS College is not just a school, but a connected learning community. In Aboriginal art, dots and circles often depict meeting places and pathways, showing the relationships between people, knowledge, and Country.

The cockatoo represents the Wakka Wakka people, often seen as a messenger and symbol of communication.

The hands represent the people in the workplace (twelve in total). The handprint is one of the oldest forms of Aboriginal rock art and symbolises identity, presence, and connection to Country. It serves as a personal signature that says “I was here”, linking each person to the land and their ancestors. The inclusion of the hands reflects how every individual leaves their mark in the shared story of the ALS College community.

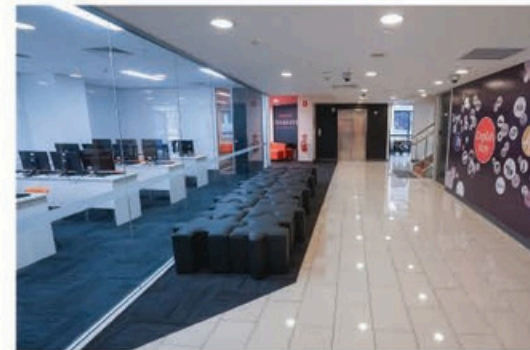
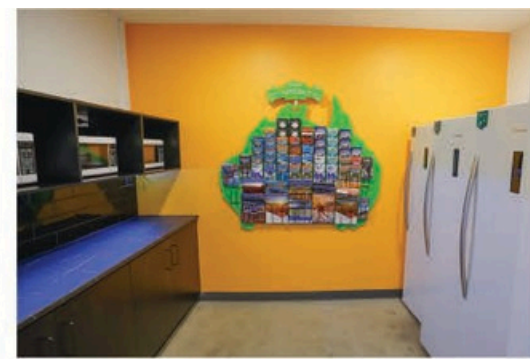
Together, these elements honour the rich cultural heritage of the Aboriginal and Torres Strait Islander peoples and express respect, unity, and connection within the ALS College community.

ALS College acknowledges Traditional Owners of Country throughout Australia and recognises the continuing connection to lands, waters and communities. We pay our respect to Aboriginal and Torres Strait Islander cultures; and to Elders past and present.

About the artist

The image was created by Tayla Wright, a Wiradjuri woman from the Central West, symbolising ALS’s connection to the Brisbane area, and paying our respects to the First Nation’s culture that is a rich part of Australia’s heritage.

SCHOOL FACILITIES



STUDENT KITCHEN / STUDENT LOUNGE



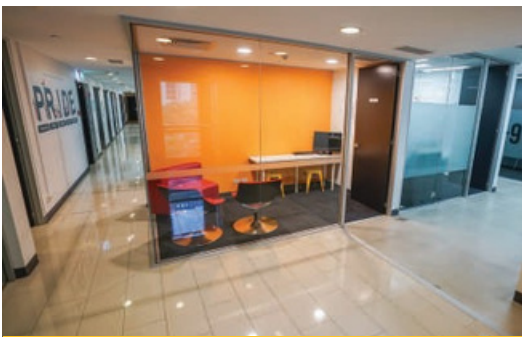
CINEMA / ENTERTAINMENT AREA



OUTDOOR BALCONY



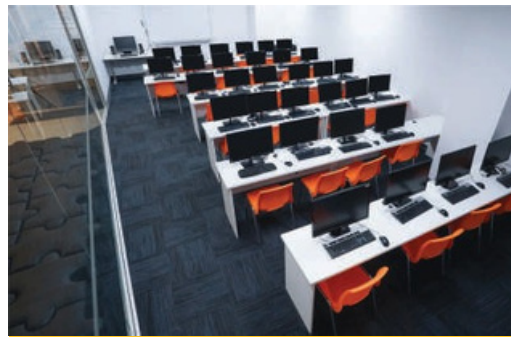
CAFE / LIBRARY / WI-FI



STUDY ROOMS / COUNSELLING ROOMS



MODERN CLASSROOMS



COMPUTER ROOMS



TOILETS / SHOWERS



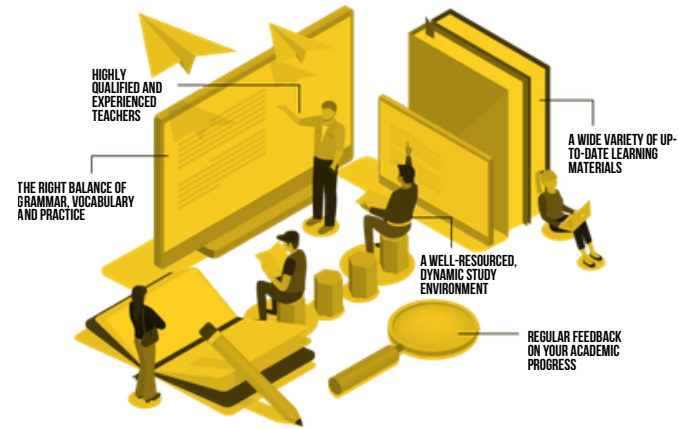
4-LEVEL CAMPUS



GENERAL ENGLISH

CRICOS 062145C

This is the first step of your journey. Studying General English will give you a solid foundation to live your daily life in an English-speaking country and open up doors, providing access to further study, work and travel opportunities. Along the way, you will meet new friends and come into contact with other cultures. The world will come to you!



SAMPLE TIMETABLE - DAY

MONDAY-FRIDAY (20 + 4 HOURS)	<p>YOU WILL BE ALLOCATED TO STUDY 8:00AM-12:00PM OR 12:30PM-4:30PM DEPENDING ON YOUR LEVEL AND CLASS AVAILABILITY</p> <p><small>*If you wish to change your timetable while you are studying with us, you can apply to do so and we will place you on waiting list depending on class availability.</small></p>
8:00AM-12:00PM	

SAMPLE TIMETABLE - EVENING

MONDAY-THURSDAY	<p>20 HOURS OF CORE CLASSES AND SKILLS CLASSES</p> <p><small>*Evening classes are only available for Pre-intermediate or higher English level</small></p>
4:00PM-9:00PM	

WHAT HAPPENS IN MY GE CLASS?

- YOU'LL **CONSOLIDATE** AND **EXTEND** YOUR KNOWLEDGE OF GRAMMAR – YOU'LL PRACTICE USING DIFFERENT TENSES TOGETHER IN USEFUL AND NATURAL CONTEXTS
- You'll systematically **EXPAND** topic-based vocabulary - and be given lots of **OPPORTUNITIES** to put it into practice!
- You'll **LEARN** to pronounce words, sentences and connected speech clearly to sound more natural and fluent
- You'll be **EXPOSED** to a variety of listening tasks that will help you deal with authentic language in real life
- You'll **ENGAGE** in stimulating and interesting texts with manageable tasks that will help you read more skilfully
- You'll **DEVELOP** your writing skills for a range of writing tasks – from social media posts to biographies and formal emails
- You'll **LEARN** common and acceptable social English phrases to be **SUCCESSFUL** in your conversations with native English speakers

You'll be presented with a variety of real-life engaging stories and stimulating topics, you'll be encouraged and helped formulate your own ideas, and – most importantly – you'll feel a sense of progress and achievement.

THE PLACE TO LEARN ENGLISH

You will be equipped with the tools you need to achieve success in English!
 ALS offers students the chance to study up to 24 hours per week;
 20 hours of Core and Skills classes (the minimum you must attend) and 4 more optional hours.

WRITING BOX

Want to improve your writing? You can do extra writing tasks in your own time. Put them in the writing box and get feedback from a teacher.

ENGLISH PLUS

TUESDAY & THURSDAY (4 HOURS/WEEK)

Optional

Conversation Plus, Business English Plus, Speaking tests, Ask a teacher, Pronunciation Plus, Job Help Plus, Wellbeing Plus

9:30AM-11:30AM *or* 1:00PM-3:00PM

LEVEL UP

WEEK 3

Optional level up test

WEEK 6

Compulsory level up test

EXPECT

TO SPEAK ENGLISH ONLY

MIXED NATIONALITY CLASSES

HOMEWORK

TO BE BUSY

TO BE CHALLENGED

TO LEARN

ELEMENTARY	PRE-INTERMEDIATE	INTERMEDIATE	UPPER-INTERMEDIATE	ADVANCED
------------	------------------	--------------	--------------------	----------

*Subject to availability

TESTIMONIALS



“ I TRIED TO STUDY ENGLISH BY MYSELF, BUT IT DID NOT WORK. I WAS VERY AFRAID TO TRY TO SPEAK ENGLISH. SINCE I STARTED MY STUDIES AT ALS, I IMPROVED MY ENGLISH AND MY CONFIDENCE. THERE ARE AWESOME TEACHERS, WHO ARE FRIENDLY AND APPROACHABLE. I LOVE THE SCHOOL'S ENVIRONMENT AND I ENJOY STUDYING HERE.

- CHIA-YUAN ”



“ TEACHERS ARE ALWAYS FRIENDLY AND THAT CREATES A GOOD ATMOSPHERE. ON MY FIRST DAY, I WAS VERY NERVOUS, AND THEY MADE IT EASY FOR ME TO START MY TIME AT ALS. I'M ALWAYS GOING TO THE SCHOOL'S ACTIVITIES. I LOVE THE MOVIE AND PIZZA NIGHT, WHERE I CAN MAKE MORE FRIENDS. I LOVE MY SCHOOL, IN AND OUT OF THE CLASSROOM.

- AYAKA ”



“ ALS IS THE FINEST ENGLISH SCHOOL IN AUSTRALIA, IT PROVIDED ALL THE SUPPORT I WAS LOOKING FOR. I WOULDN'T HAVE BEEN ABLE TO ACHIEVE MY GOALS WITHOUT THEIR HIGH TEACHING STANDARD. FROM A GENERAL ENGLISH TO A CAMBRIDGE ADVANCED STUDENT, I'M MORE THAN HAPPY.

- DANIELE ”



“ ALS IS THE BEST SCHOOL IN BRISBANE. I'M VERY HAPPY TO COME TO THE SCHOOL AND STUDY WITH GREAT TEACHERS. SPEAK MORE CLASSES AND WRITING BOX ARE GREAT EXTRA SUPPORT THAT STUDENTS CAN GET. ALSO THE STAFF ARE SUPER KIND, THANK YOU . ^^.

- JEONGHYEOK ”

THE 6-WEEK STUDENT LIFECYCLE

WEEK 1 OR 7

- ASSIGNED TO A NEW CORE CLASS CHECK YOUR
- EMAIL FOR THE PLAN OF THE BLOCK

WEEK 2 OR 8

KEEP STUDYING!

WEEK 3 OR 9

- KEEP STUDYING!
- LEVEL UP TEST (OPTIONAL)

WEEK 4 OR 10

HAVE YOU DONE THE OPTIONAL LEVEL UP TEST?

YES

CHECK TO SEE IF YOU HAVE MOVED CLASSES

NO

KEEP STUDYING!

WEEK 5 OR 11

- KEEP STUDYING!
- SPEAKING TEST (OPTIONAL, BUT STRONGLY RECOMMENDED)

WEEK 6 OR 12

- COMPLETE A LEVEL UP TEST WITH YOUR TEACHER IN CLASS
- JOIN THE PRIDE AWARD CEREMONY
- COME AND JOIN US FOR AN AMAZING FREE TRIP TO NOOSA, BYRON BAY AND MANY MORE PLACES!

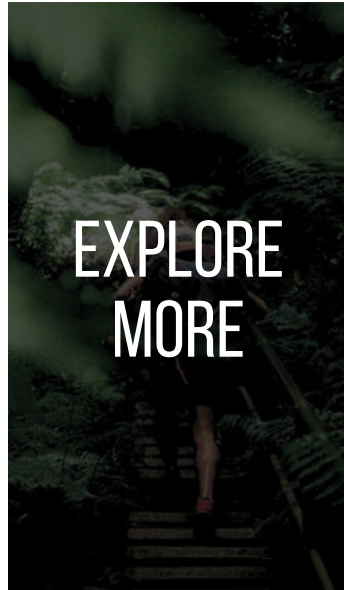
*Subject to change

EVERY WEEK

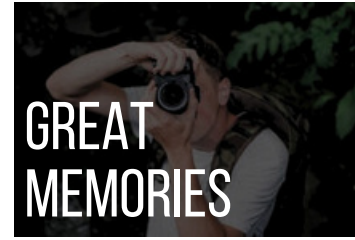
CHECK THE ENGLISH PLUS AND SOCIAL PROGRAM CALENDAR ON YOUR STUDENT PORTAL AND SIGN UP!



WE PROVIDE EXCITING FREE ACTIVITIES EACH MONTH!



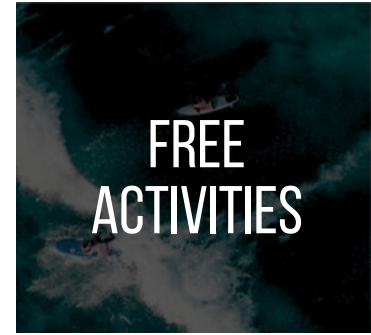
EXPLORE
MORE



GREAT
MEMORIES



In addition to our wide range of academic opportunities for you to improve your English, we also have a great choice of free and exciting social activities you can take part in. We have movie nights, excursions, PlayStation championships and much more, all designed so that you can relax, have fun and make new friends and memories. Check out our current social programme here.



FREE
ACTIVITIES



MAKE
FRIENDS



CAMBRIDGE EXAM PREPARATION

CRICOS 062149K / 062148M

If you already have a strong foundation in English, you can move on to study an exam preparation course. The Cambridge Exam Preparation - First Certificate (B2) | CRICOS: 062149K, and Cambridge Exam Preparation - Advanced (C1) | CRICOS: 062148M certificates are globally recognised for work and study purposes. Not only will you learn the skills and strategies needed to help you take the exam, but with the help of our dedicated teachers, you will also improve your vocabulary, grammar and skills.

You will also have weekly practice tests and regular mock tests in test conditions, with close monitoring, support, tips and in-depth feedback from your teacher.

CEFR IELTS EQUIVALENT

B2 Vantage **5.5 - 6.5**

Cambridge First (B2) is for students at an upper-intermediate level. It is an ideal exam for people who want to use English for work or study purposes.

C1 EFFECTIVE OPERATIONAL PROFICIENCY **6.5 - 7.5**

Cambridge Advanced (C1) is for advanced users of English. This exam is aimed at people who can use written and spoken English for most professional and social purposes. It is widely recognised for work or study purposes.

EXPECT

- To speak English only
- A lot of homework
- To be very busy
- To do tests every week
- To be challenged
- To learn and improve your English level

SAMPLE TIMETABLE (Subject to change)

MONDAY-FRIDAY (20 HOURS)

8:00AM-12:00PM
CORE AND SKILL CLASSES

TALK TO OUR STAFF FOR
EVENING CLASS AVAILABILITY

ENTRY REQUIREMENT

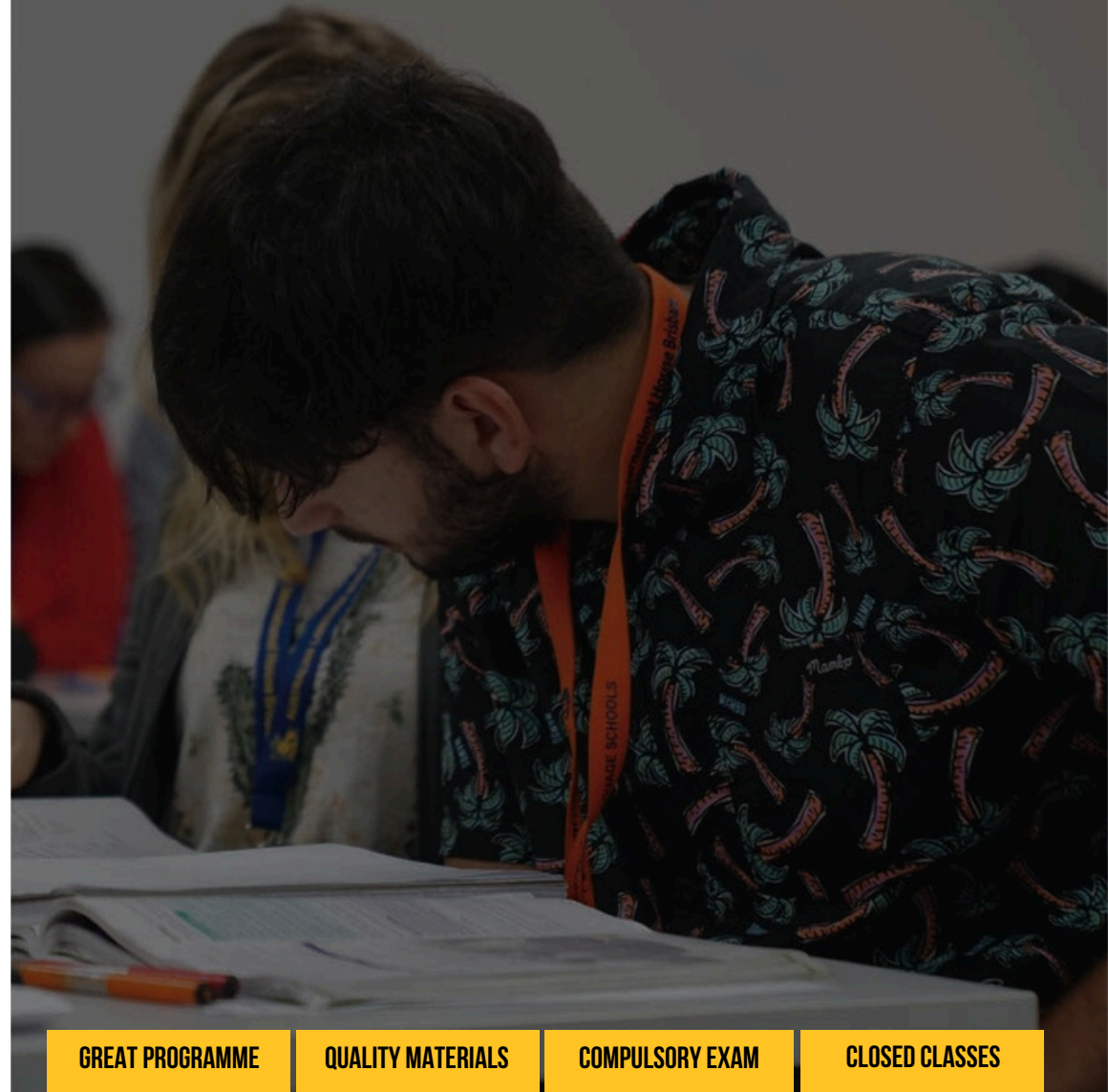
CambridgeFirst: Upper-Intermediate level | Cambridge Advanced: Advanced level

LENGTH: 10 or 12 weeks - See Start Dates page for intakes

We prepare for

Cambridge

English Qualifications™



GREAT PROGRAMME

QUALITY MATERIALS

COMPULSORY EXAM

CLOSED CLASSES



IELTS PREPARATION COURSE

CRICOS 082147A

If you plan to do the IELTS exam to help you access work, study or a visa, our IELTS preparation course will get you ready for the exam. Our teachers are experienced and qualified, with strong track records of helping students reach their IELTS goals. Many of our IELTS students go on to do further study in Australia or other English-speaking countries.

During your classes, you will follow an IELTS preparation coursebook and you will focus on a different topic each week, building up ideas, language and practising exam technique all within that topic. Your teacher will also introduce you in more depth to the strategies you need to do the test effectively, and of course, you will do lots of test practice! In addition, your teacher will focus on the grammar and vocabulary that will help you to be more successful in the test.

Every week you can do an online mock test so that you get used to doing the test in timed conditions. You can also do additional writing tasks and put them in our Writing Box to get feedback from a teacher and access books and a wide range of resources to continue your studies at home.

WEEKLY TOPICS

MEDIA	HEALTH	THE BUILT	THE WORLD AROUND US	MEN AND WOMEN
ANIMALS	FOODS	ENVIRONMENT LANGUAGE	ARTS	MUSIC
MIGRATION	TECHNOLOGY	GEOGRAPHY	FAMILY	SHOPPING
NATURAL DISASTERS	FASHION	CRIME	CELEBS	EDUCATION

* A LIST OF 20 MOST COMMON IELTS TOPICS - THESE MAY VARY

SAMPLE TIMETABLE - DAY

MONDAY-FRIDAY (20 + 4 HOURS)		YOU WILL BE ALLOCATED TO STUDY 8:00AM-12:00PM OR 12:30PM-4:30PM DEPENDING ON YOUR LEVEL AND CLASS AVAILABILITY If you wish to change your timetable while you are studying with us, you can apply to do so and we will place you on waiting list depending on class availability.
8:00AM-12:00PM	OR 12:30PM-4:30PM	

SAMPLE TIMETABLE - EVENING

MONDAY-THURSDAY	20 HOURS OF CORE CLASSES AND SKILLS CLASSES
4:30PM-9:30PM	

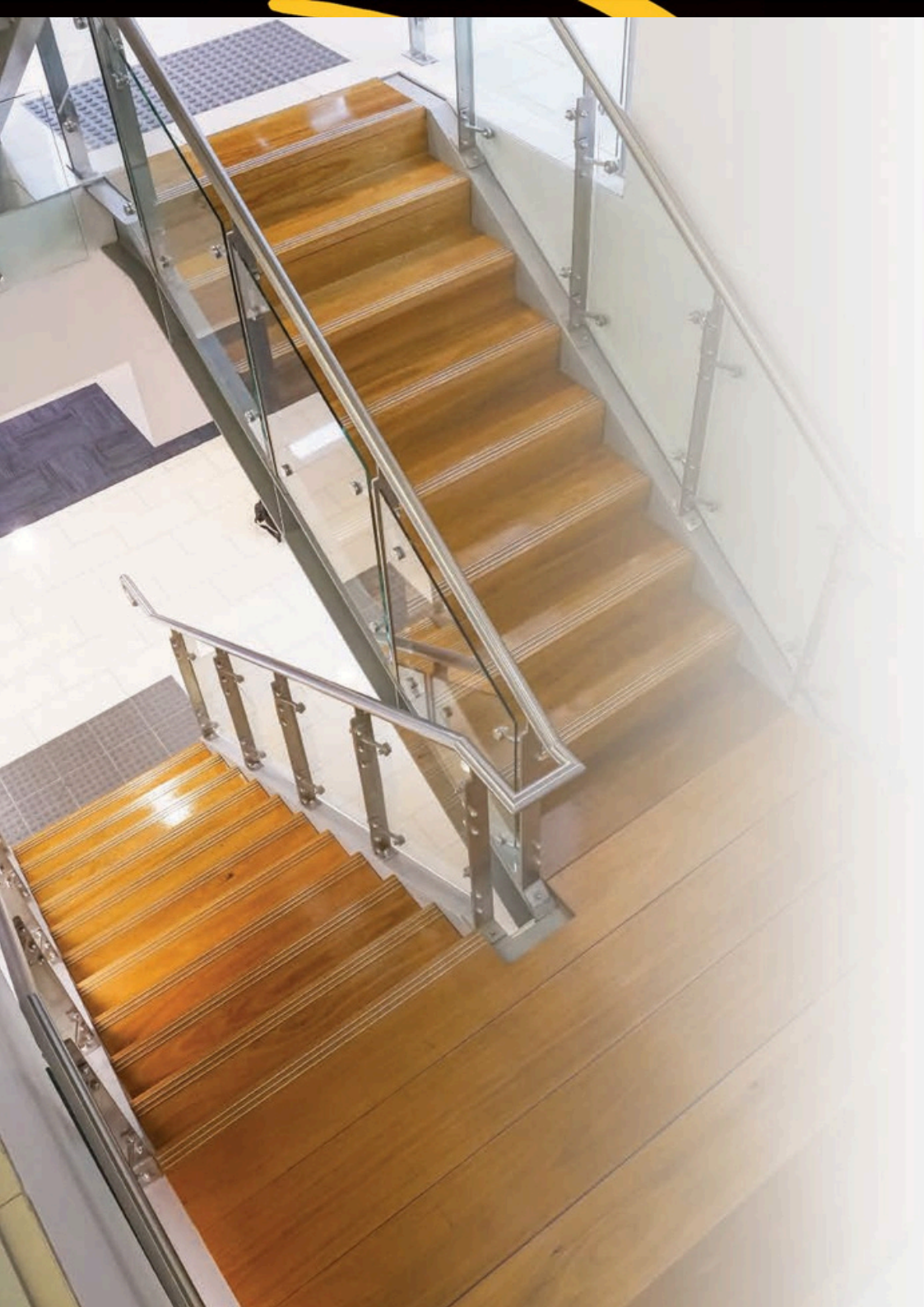
*Evening classes are only available for Pre-intermediate or higher English level

MOCK TEST

PERSONAL FEEDBACK

EXPERIENCED TEACHERS

WRITING PORTFOLIO



PATHWAY

Prepare for further study in Australia! There are dozens of University and further study courses waiting for you in Brisbane and South East Queensland.

At ALS you can improve your English level while getting yourself ready for further education in Australia, without the need to take the IELTS exam.

FURTHER EDUCATION



CRICOS 00233E



CRICOS 00244B



CRICOS 01241G



CRICOS 01737F



CRICOS 03020E



CRICOS 00117J



CRICOS 02898C



CRICOS 03041M



CRICOS 02425C

Pathway students are monitored from the moment you start by our Pathway Coordinator to ensure that you meet and exceed your entry requirements for the next place of study.

For more information, please visit our website,
<https://www.ihbrisbane.com.au/explore-more/pathways-to-further-education/>

*Subject to change

LIVING IN BRISBANE

Being comfortable whilst you study is very important, so we have a few options available that we can help arrange for you!

*Student
Accommodation
Homestay*



Many students also choose to find their own accommodation, either by renting their own place or in a share house. Both of them can also be great options, but please check the information on renting before you do – make sure you know your rights – and there are some good places to start looking in the useful links on our website.

TYPICAL MONTHLY COST OF LIVING IN BRISBANE (PRICES IN AUSTRALIAN DOLLARS)

• Food (Buy own food)	\$350	• Telephone and power	\$84	• Transport (buses, trains etc)	\$180
• Entertainment	\$208	• Other miscellaneous costs	\$250	• Approx average living costs per month	\$1,500

This price information is correct at time of printing, but it is subject to change each year. See our student handbook for up-to-date prices

Vocational Training

COMBINING ENGAGING MATERIALS WITH EXCELLENT TRAINERS, PERSONALISED CARE AND MODERN FACILITIES, WE OFFER A GREAT LEARNING EXPERIENCE, TO HELP YOU GET THE QUALIFICATIONS TO TAKE YOU WHERE YOU WANT TO GO.



IT NEVER GETS EASIER, YOU ONLY GET BETTER!

WWW.ALSCERTIFICATES.COM

116 Adelaide Street, Brisbane, QLD, Australia 4000
PO BOX 13393 George Street, Brisbane, QLD, Australia 4003

Phone +61 7 3229 3389
Email enrol@ihbrisbane.com.au

CRICOS Provider No. 02885G/RTO No. 32044

ALS COLLEGE

+ BUSINESS

+ MANAGEMENT

+ RETAIL

+ LEADERSHIP

+ HORTICULTURE

+ UNIVERSITY PATHWAY

+ AND MORE